

The number of staff in the NHS has been **increasing** by an average of about **0.5%** per year over the last seven years

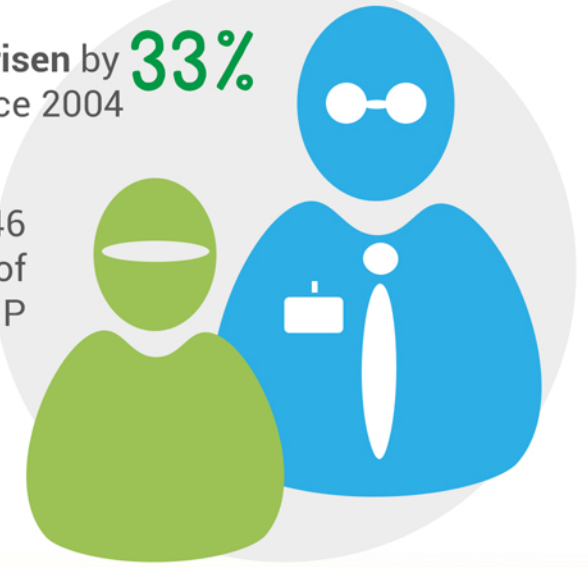
[Data sources](#)



compared with an average population growth of **0.75%**

The number of GPs in the UK has risen by **33%** since 2004

There is now an average of 1,546 patients for each GP - a **reduction** of **566** patients per GP



Hospital admissions have risen by **27.5%** since 2006-07, with the greatest increase for the 65-84 age group over the last 10 years

'Bed blocking' prevents new admissions, causing backlogs in A&E with a knock-on to ambulance crews



Visits to Accident and Emergency (A&E) departments have risen by **9%** in the period from 2010 - 2017

Demand for ambulance services has increased by **19%** in the period from 2011-12 to 2016-17